

# MINDED INSTALLATION GUIDE

Author : RPU

Date : 01/12/2009

Review by :

Date :

| DIFFUSION  |            |        |   |
|------------|------------|--------|---|
| Mind Users |            |        |   |
| Version    | Date       | Author | Comments                                |
| VERSIONS   |            |        |   |
| V0.1       | 01/12/2009 | RPU    | Base Version (fr)                       |
| V0.2       | 02/04/2010 | OMA    | Plug-ins and Eclipse update, traduction |



## SUMMARY

|  |          |
|--|----------|
| <b>1. ECLIPSE INSTALLATION AND CONFIGURATION .....</b> | <b>4</b> |
| 1.1. SHORTCUTS .....                                   | 4        |
| 1.2. ECLIPSE DOWNLOAD.....                             | 4        |
| 1.3. ECLIPSE PLUG-INS .....                            | 4        |
| <b>2. INSTALLATION VIA UPDATE SITE .....</b>           | <b>5</b> |
| <b>3. INSTALLATION VIA ZIP ARCHIVE .....</b>           | <b>8</b> |



'infiniment petit, infiniment utile

**MINALOGIC**

---



## 1. ECLIPSE INSTALLATION AND CONFIGURATION

This document describes the installation and configuration of Eclipse tu support MindEd plugins.

### 1.1. Shortcuts

- TMF : Textual Modeling Framework
- EMF : Eclipse Modeling Framework
- GMF : Graphical Modeling Framework

### 1.2. Eclipse download

Eclipse SDK Galileo 3.5.2 can be downloaded from <http://www.eclipse.org/downloads/>. Choose "Eclipse IDE for Java Developers". Download and unzip Eclipse.

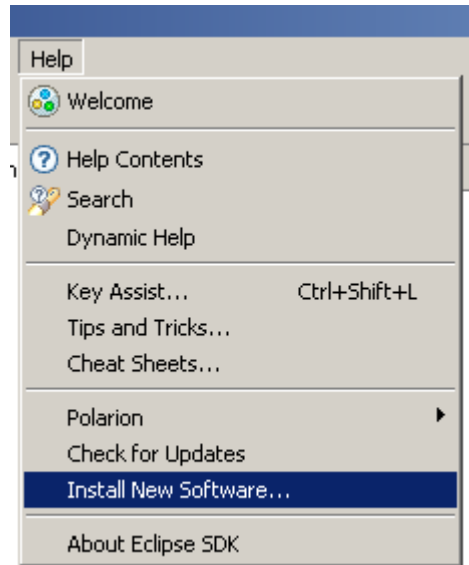
### 1.3. Eclipse plug-ins

Eclipse plug-ins can be installed via their update sites. See point 2 : Installation via Update Site for a walkthrough.

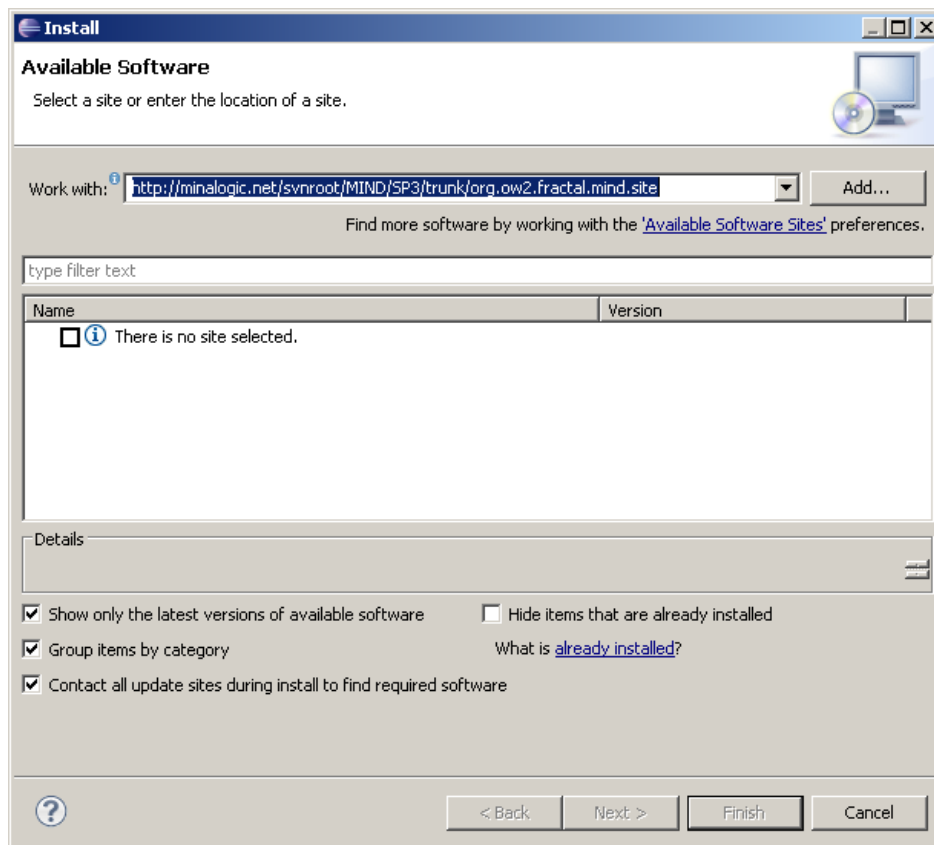
- GMF 2.2.2 : <http://download.eclipse.org/modeling/gmf/updates/releases/>
- EMF 2.5 : <http://download.eclipse.org/modeling/emf/updates/releases/>
- TMF xText 0.7.2 : <http://download.eclipse.org/modeling/tmf/updates/>
- Xtext Antlr 0.7.2 : <http://download.itemis.com/updates/milestones>
- CDT 5.0.1 : <http://download.eclipse.org/tools/cdt/releases/ganymede>
  - Eclipse C/C++ Development Tools 5.0.1
  - CDT Utilities 5.0.0
- EMF Model query OCL 1.2 : <http://download.eclipse.org/modeling/emf/updates/releases/>
- MindEd Plugins v0.1 : [http://minalogic.net/svnroot/MIND/SP3/tags/v0.1\\_20012010/org.ow2.fractal.mind.site](http://minalogic.net/svnroot/MIND/SP3/tags/v0.1_20012010/org.ow2.fractal.mind.site)

## 2. INSTALLATION VIA UPDATE SITE

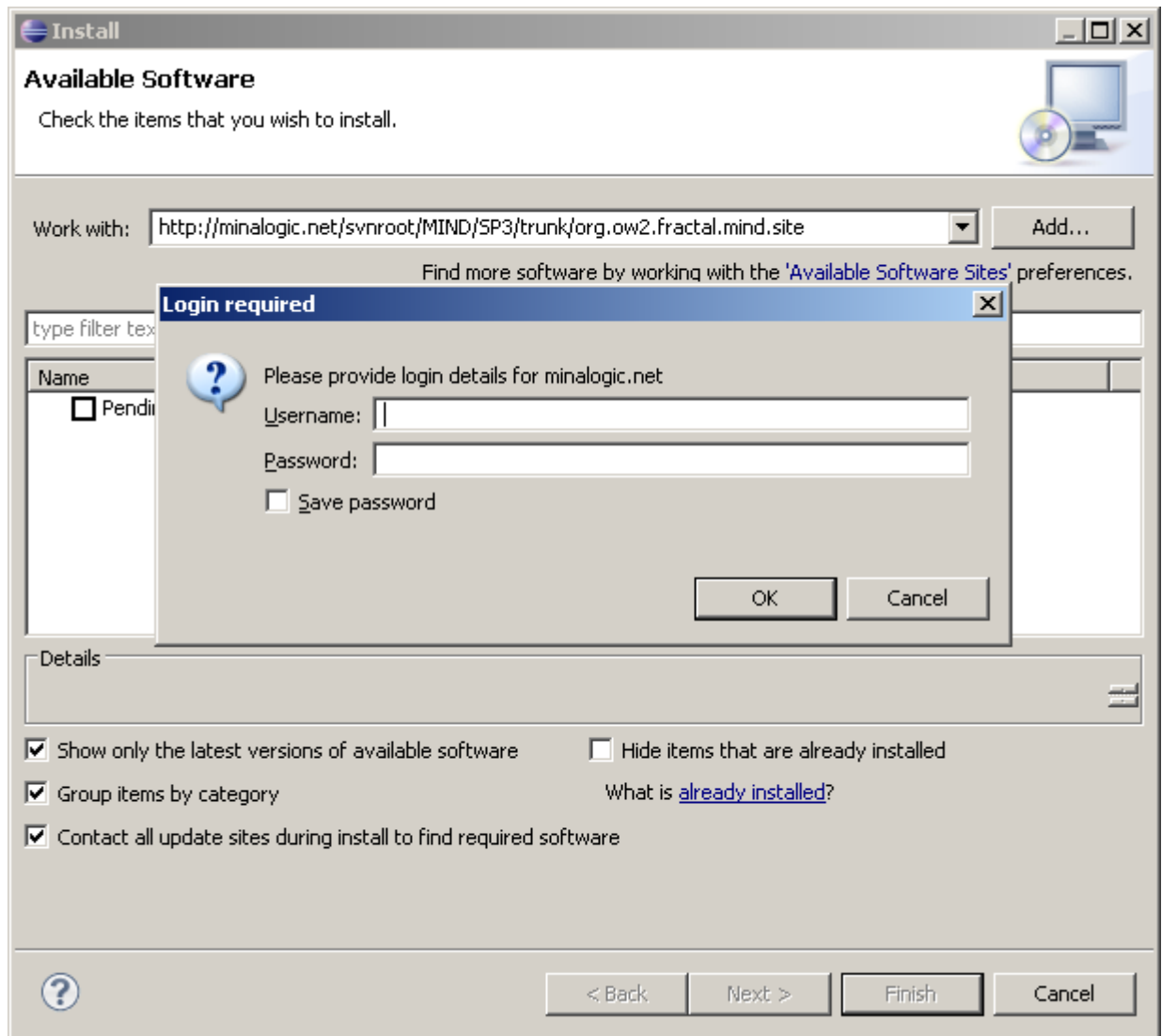
- ⇒ Launch Eclipse 3.5.
- ⇒ Go to Help/Install New Software

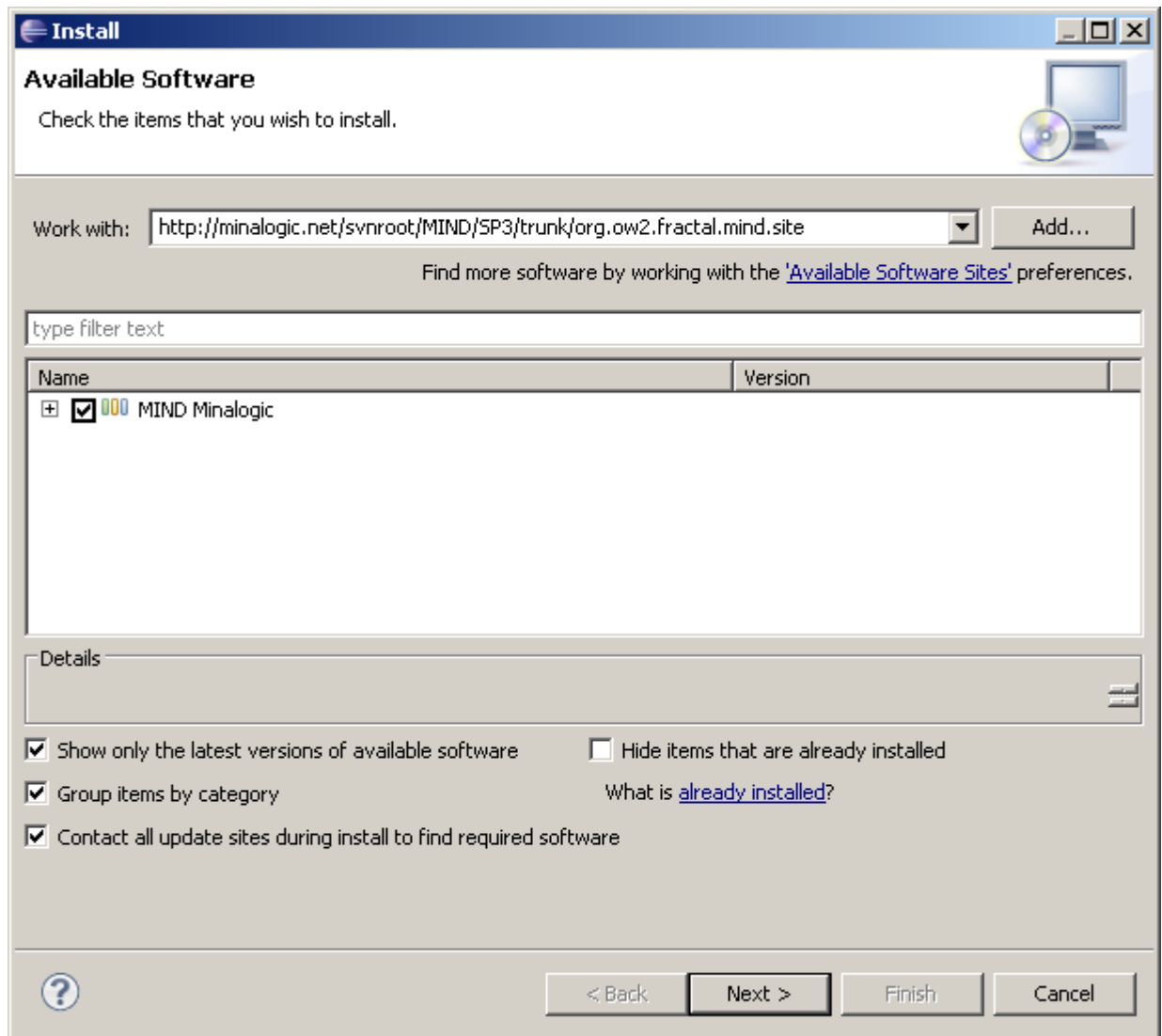


- ⇒ In "Work with" enter the update site's URL



- ⇒ Validate and enter your login + password CodeX Minalogic





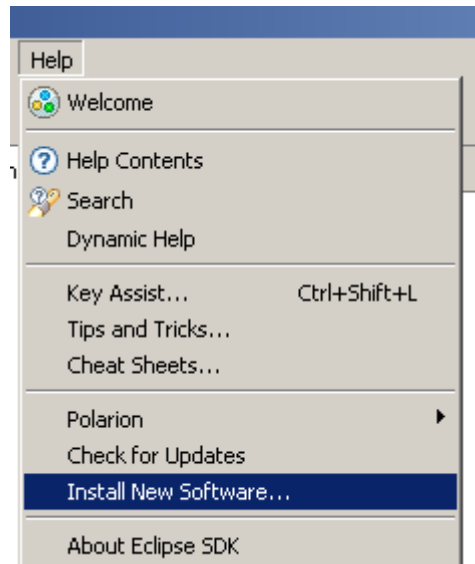
- ⇒ Finish the plugin installation
- ⇒ Restart Eclipse

### 3. INSTALLATION VIA ZIP ARCHIVE

⇒ Download the latest version here :

[http://forge.ow2.org/project/showfiles.php?group\\_id=375](http://forge.ow2.org/project/showfiles.php?group_id=375)

⇒ Go to Help/Install New Software



- ⇒ Select MIND Minalogic in the list of plugins
- ⇒ In "Work with" give the downloaded zip's path
- ⇒ Select MIND Minalogic
- ⇒ Finish the install process
- ⇒ Restart Eclipse